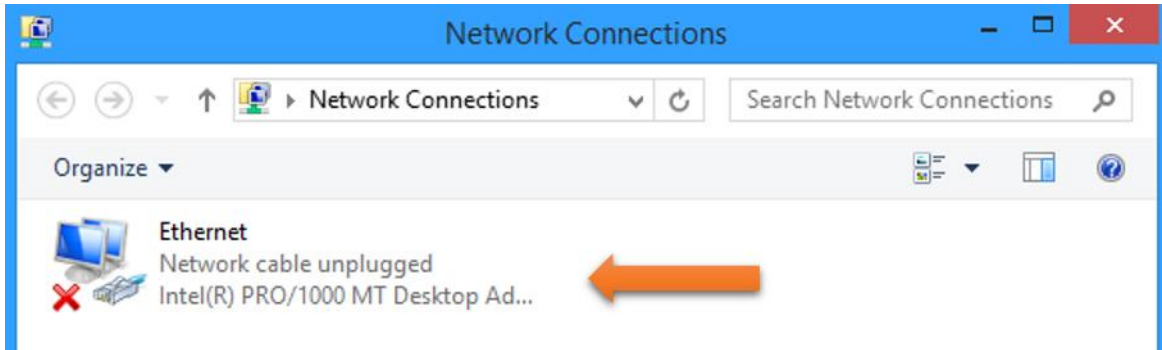


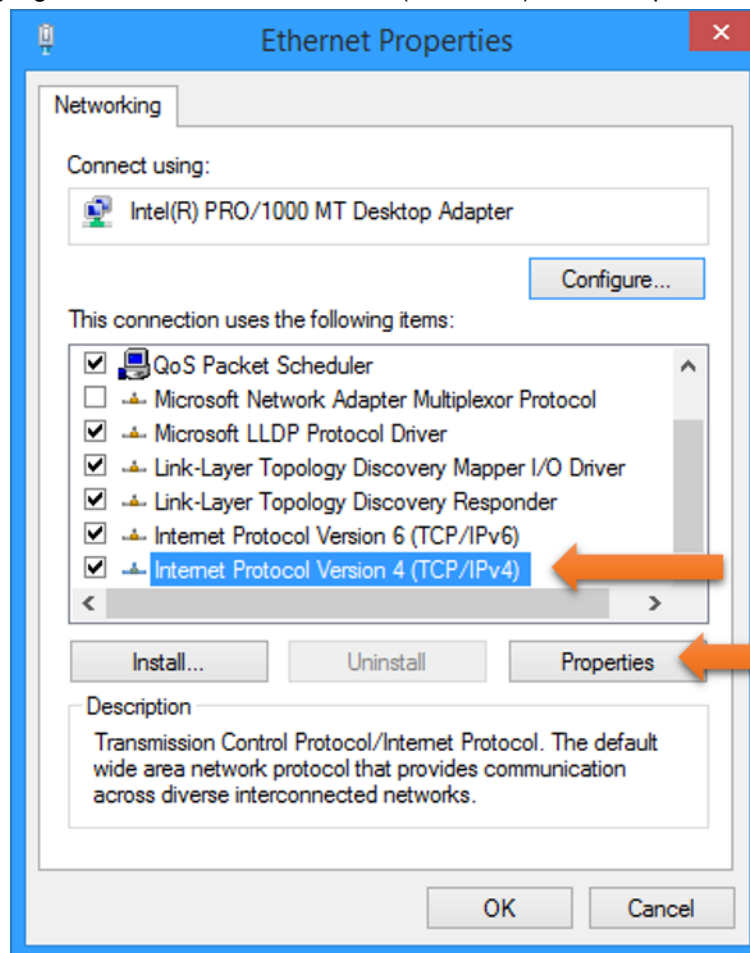
4 Connect to the SK-S7G2 Board

Step 4.1 Configure the PC for DHCP on the LAN connection and share the Wi-Fi internet connection with the LAN Ethernet connection. Type Win+X and go to **Network Connections**.

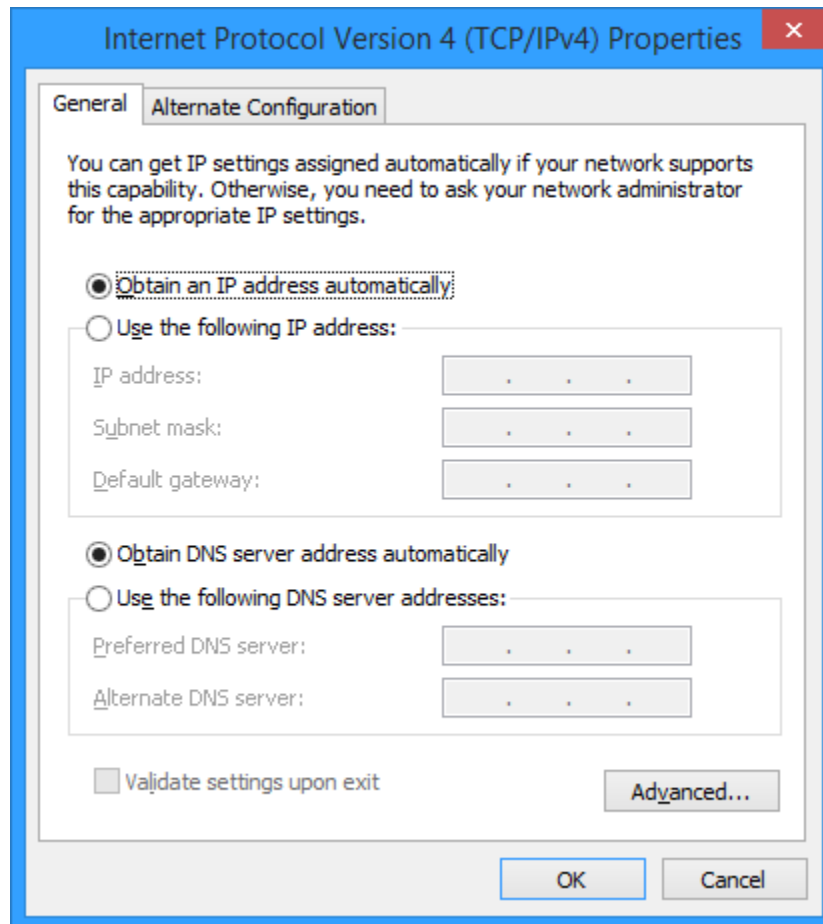
Step 4.2 Double Click on the **Local Area Connection** to access the Properties for that connection. Your screen may look different.



Step 4.3 Highlight Internet Protocol Version 4 (TCP/IPv4). Click Properties.



Step 4.4 Change the properties to: Obtain an IP address automatically and Obtain DNS server address automatically.



Step 4.5 Click OK and Close.

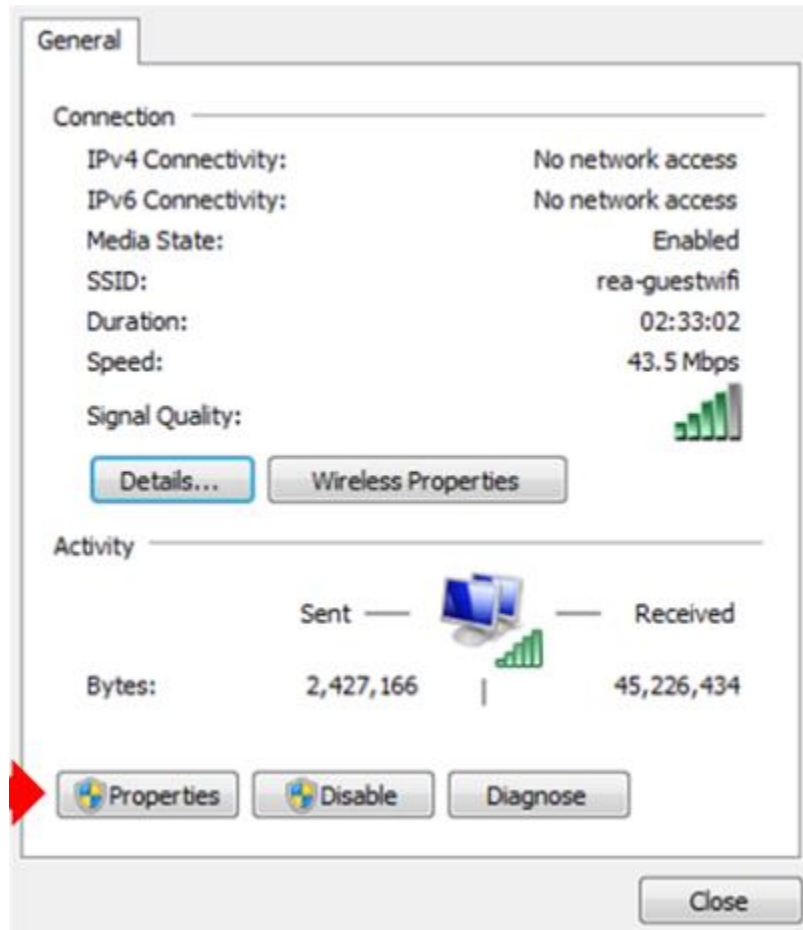
Step 4.6 Navigate back to the Windows Control Panel and view then Network Connections

Step 4.7 Right Click the Wireless Network Connection and enable it if it is disabled.

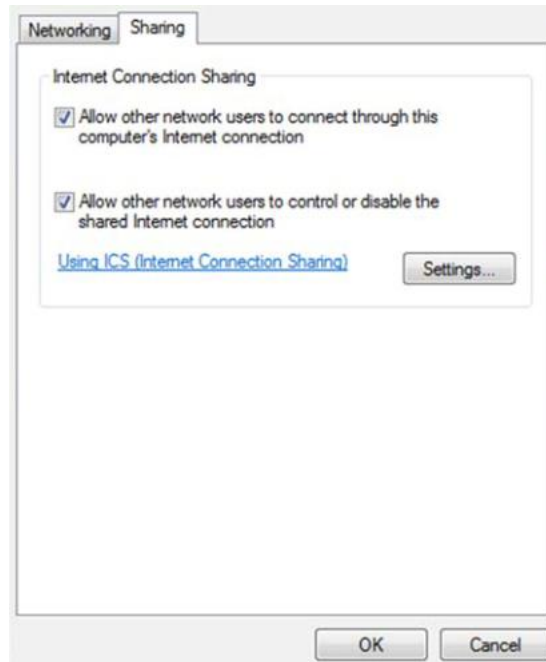


Step 4.8 Click on the Wireless Network Connection and select the SSID of the wireless network to connect to. Enter in the Wi-Fi security key that you were given. Select Public Network if asked for the network type.

Step 4.9 Click on the **Properties** for the **Wi-Fi** connection.



Step 4.10 Now click on the **Sharing** tab and select **Allow other network users to connect through this computer's internet connection**. The Wireless Network Connection Properties should now look like this:



Step 4.11 Click OK and Close.

Step 4.12 Go back to the step 4.12 of the actual lab guide.